



**CAMPBELL RIVER**  
School District 72

MEMO

**Date:** January 27, 2023  
**To:** The Board of Education  
**From:** Kevin Patrick, Secretary-Treasurer  
**Subject:** **PUBLIC BOARD MEETING – January 31, 2023**

---

**A Meeting of the Board of Education will be held:**

**Date:** Tuesday, January 31, 2023  
**Time:** 7:30 pm  
**Place:** School Board Office Board Room, 425 Pinecrest Rd

The public is invited to attend the public board meeting in person or join the meeting livestream. The following link will allow you to observe the board meeting and to electronically participate in the question period on agenda items.

Attend the January 31 meeting online <https://bit.ly/3WFGGs3>

SD72 event calendar <https://www.sd72.bc.ca/page/109/calendar>

Kevin W. Patrick, CPA, CGA  
Secretary-Treasurer

KWP:nc

Enc.

c: Schools  
Partner Groups

**SCHOOL DISTRICT NO. 72 (CAMPBELL RIVER)**

**BOARD OF EDUCATION  
PUBLIC BOARD MEETING  
7:30 pm, Tuesday, January 31, 2023  
School Board Office Board Room**

**DRAFT AGENDA**

1. Call to Order/ Chairperson's Remarks
2. Superintendent's Remarks
3. Approval of the minutes of the meeting of January 10, 2023 *Exhibit*
4. Business arising from the minutes
5. Additions or alterations to the agenda
6. Approval of the agenda
7. Report of Board decisions from the January 31, 2023 Confidential Board Meeting
8. Correspondence
9. Public Submissions
10. Agenda Submissions
11. Educational Submissions
  - A. Carihi Grade 9 cohort *Presentation*
12. Electorate and Board Matters
13. Educational Issues
14. Business Administration
  - A. Finance Warrant No. 6 December 31, 2022 (K. Patrick) *Exhibit*  
*(motion required)*
  - B. Quarterly Finance Report - period ending December 2022 (K Patrick) *Exhibit*

Public Board Meeting January 31, 2023

15. Committee Reports
  - A. Calendar consultation committee Jan 12, 2023 (D Hagen)
  - B. Student leadership committee Jan 19, 2023 (S Briggs)
  - C. CRDTA/ Board liaison meeting January 23, 2023 (C Gillis)
  - D. BCPSEA AGM held January 26-27, 2023 (K Eddy)
16. Any Other Business
17. Questions from Anyone Present on Agenda Items for This Meeting
18. Adjournment

Kevin W. Patrick, CPA, CGA  
Secretary-Treasurer

KWP:nc

**MINUTES OF A MEETING OF THE BOARD OF EDUCATION OF SCHOOL DISTRICT NO. 72 (CAMPBELL RIVER), HELD IN PERSON AND ELECTRONICALLY AT 7:30 PM, ON TUESDAY, JANUARY 10, 2023**

**Present:** K. Eddy, Chair; C. Gillis, Vice-Chair; S. Briggs, J. Gladish, D. Hagen, D. Harper and J. McMann, Trustees; P. Cizmic, Associate Superintendent, M. Kyle, Associate Superintendent; J. Morrow, Superintendent; and K. Patrick, Secretary-Treasurer.

---

**23-01 Call to Order/ Chair's Remarks**

Board Chair Eddy called the meeting to order at 7:30 pm. Eddy expressed her gratitude for the new year and noted that January 27 is International Family Literacy Day.

**23-02 Superintendent's Remarks**

Superintendent Morrow said that he is looking forward to the exciting opportunities for learning that 2023 will bring. The Board has begun the process to renew the Strategic Plan. Morrow acknowledged teachers-teaching-on-call (TTOCs) and casual CUPE staff for their response to callouts to the district's many classrooms and worksites.

**23-03 Approval of the Minutes of December 13, 2022**

It was proposed by C. Gillis, seconded by D. Harper and **CARRIED:**

*THAT the minutes of the meeting of December 13, 2022 are hereby approved as circulated.*

**23-04 Business Arising from the Minutes**

Trustee Hagen asked about response to the launch of the Parent Portal app. Superintendent Morrow referred the question to Manager of Communications Jennifer Patrick who reported that response had so far been positive. A parent survey is planned for February.

**23-05 Approval of the Agenda**

It was proposed by D. Hagen seconded by J. McMann and **CARRIED:**

*THAT the agenda is hereby approved as circulated.*

**23-06 Report from the January 10, 2023 Confidential Board Meeting**

Vice-Chair Gillis reported general statements of matters discussed in the Board's Confidential Meeting, and in accordance with Section 72(3) of the School Act, reports the following:

1. Teaching, administrative and support staff changes;
2. Property, legal and financial issues;

**23-07 Student and Family Affordability Fund**

Director of Learning Support Services, Brenna Ewing and District Principal of Indigenous Education, Debra Martel provided an update on the implementation of the Student and Family Affordability Fund. The district's allocation of \$607,563 by the Ministry of Education and Child Care is to be used in 2022/ 2023 to: enhance existing programs, offset supply fees and support food security programs.

Ewing and Martel shared a presentation on the consultation process that took place in order to determine how to best target the funds to support families and leverage existing programs. Unspent funds can be rolled over for distribution in 2023/2024 according to the plan. Trustees asked about the consultation process, measurement of outcomes and fulfillment of the plan.

**23-08 Board Workplan Update**

Chair Eddy shared the Board’s updated annual workplan.

**23-09 Final Operating Grant Comparison**

Secretary-Treasurer Kevin Patrick presented the Board’s final funding allocations for 2022/2023. The Ministry of Education and Child Care funding is based on confirmed student enrolments. The Ministry’s grant schedule was received at the end of December and the final budget will be amended and submitted to the Ministry as per their schedule in February. Labour settlements will be funded and included in this fiscal year. The process to project the budget for 2023/2024 is already started. Trustee Harper asked about the reported number of home school students. Patrick responded that many home school students in our area are registered with other districts.

**23-10 Questions from anyone present on agenda items for this meeting:**

**Question 1** – Debra Coombes, President, Campbell River District Teachers’ Association (present in the gallery)

“For the Student and Family Affordability Fund are those allocations earmarked or can new ideas be brought forward? I hear that some schools feel they are just now able to identify emergent needs”.

Superintendent Morrow responded that there will be more opportunity for response to emergent needs building on existing program enhancements.

**Question 2** – Debra Coombes, President, Campbell River District Teachers’ Association (present in the gallery)

“Is the inclusion of the Board work plan in the agenda something that will continue? It is helpful to earmark dates.”

Chair Eddy responded that it will continue to shared.

**Question 3** – Debra Coombes, President, Campbell River District Teachers’ Association (present in the gallery)

“Did you receive the correspondence from CRDTA with a request for the CRDTA/ Board liaison committee to meet?”

Chair Eddy said that it had been received and a response had been sent to the CRDTA manager.

**23-11 Adjournment**

The meeting adjourned at 8:12 pm.

Summary of Accounts	General Operating	Payroll	Summer Savings	US Funds	TOTAL
Bank Balance beginning, per statement	10,563,276.07	(3,085,314.76)	632,834.19	15,040.71	8,125,836.21
O/S Cheques last month	23,306.10	75,622.73			98,928.83
O/S Payroll last month					-
O/S Deposits last month	(135,289.14)				(135,289.14)
G/L Balance	10,675,259.11	(3,160,937.49)	632,834.19	15,040.71	8,162,196.52
Deposits	356,950.92				356,950.92
EFT	6,118,530.02				6,118,530.02
Benefit Payroll	2,684.09				2,684.09
Payroll Reversal	-				-
Interest	21,467.83		1,562.19	30.20	23,060.22
	6,499,632.86	-	1,562.19	30.20	6,501,225.25
Cheques	122,767.51				122,767.51
Direct Deposits	1,291,615.96	3,373,263.03			4,664,878.99
Direct Payments	3,040,632.04				3,040,632.04
					-
					-
					-
					-
US Batch				7,608.00	7,608.00
	4,455,015.51	3,373,263.03	-	7,608.00	7,835,886.54
					-
Service Charges	1,140.01			35.00	1,175.01
US Exchange					-
Wire Transfer Fee	17.00				17.00
INTL Wire Transfers	13,935.00				13,935.00
BMO Prchs Card Pymnt	145,241.17				145,241.17
WCB Premiums 040119-063019					-
PST Filing					-
Employer Health Tax Pymnt	246,700.65				246,700.65
Moneris Fees					-
Transfers to Payroll Account	3,085,314.76	(3,085,314.76)			-
Transfers to USD Account					-
Transfers to Summer Savings Account	215,314.44		(215,314.44)		-
	3,707,663.03	(3,085,314.76)	(215,314.44)	35.00	407,068.83
G/L Balance	9,012,213.43	(3,448,885.76)	849,710.82	7,427.91	6,420,466.40
O/S Cheques-current	41,182.66	-			41,182.66
O/S Deposits	(22,692.33)				(22,692.33)
O/S Payroll					-
Bank Balance ending	9,030,703.76	(3,448,885.76)	849,710.82	7,427.91	6,438,956.73
Bank Balance, per statement	9,030,703.76	(3,448,885.76)	849,710.82	7,427.91	6,438,956.73
	-	-	-	-	-

<b>GENERAL ACCOUNT</b>		
DISBURSEMENTS		\$ 4,462,623.51
DEPOSITS		\$ 14,663,421.77
<b>PAYROLL DISBURSEMENTS</b>		
Teaching Net Payroll	\$ 2,111,713.00	
Operating Net Payroll	1,170,134.38	
Substitute Net Payroll	91,415.65	\$ 3,373,263.03
<b>Bank Charges and Debt Services</b>		
(1) U.S. Exchange	\$ -	
(2) Service Charges	1,175.01	
(3) Moneris	-	
(4) BMO Purchase Card	145,241.17	
(5) Wire transfers	13,952.00	
(6) Employer Health Tax	246,700.65	
(7) WCB	-	
(8) PST Self-assessment filing	-	
		\$ 407,068.83
Closing Bank Balance		<b>\$ 6,420,466.40</b>
<b>RECONCILIATION</b>		
<b>Account Balances</b>		
General	\$ 9,030,703.76	
Payroll	(3,448,885.76)	
Teach Summer Pay Trust	849,710.82	
U.S. Account	7,427.91	\$ 6,438,956.73
Add: O/S Deposits	-	
Less: O/S Cheques - General	(41,182.66)	
Less: O/S Direct Payments - General	22,692.33	
Less: O/S Cheques - Payroll	-	
Less: O/S Cheques - Summer Savings	-	
Less: O/S Cheques - US	-	\$ (18,490.33)
Closing Bank Balance		<b>\$ 6,420,466.40</b>
	(Chairperson of the Board)	
	(Secretary-Treasurer)	

Opening Balance			8,162,196.52
RECEIVED FROM			AMOUNT
12887	INTERNATIONAL IN-1436/BRAND,FELIX	CR	300.00
12889	INTEREST ON ACCOUNT	CR	21,467.83
12880	WCB-P.STEWART #30312319-NOV 14-NOV 20	CR	108.56
12881	OCEAN GROVE IN/OUT ACCOUNT	CR	791.55
12882	PINECREST TECHNOLOGY ACCOUNT	CR	3,561.80
12883	ROBRON IN/OUT ACCOUNT	CR	124.18
12884	CEDAR IN/OUT ACCOUNT	CR	8,360.11
12885	CR & DISTRICT ASSOCIATION FOR COMM. LVG	CR	5,968.82
12886	ANNA CHATTERTON-DIST. ACADEMIC AWARD	CR	500.00
12888	LESLEY BROWN	CR	140.00
12890	ROBERT WILSON	CR	35.00
12891	OCEAN GROVE PAC-CHOCOLATES	CR	15,166.85
12892	FIELD TRIPS	CR	360.70
12893	TRANSPORTATION	CR	62.80
12894	SOUTHGATE-NOV BMO	CR	1,907.99
12895	INTERNATIONAL IN-1380/RITCHE, BEN	CR	700.00
12896	CARIHI IN/OUT	CR	6,515.56
12897	SCHOOLS PROTECTION PROGRAM	CR	84.91
12898	PENNINSULA CO-OP	CR	107.26
12899	S.DURAND/PACIFIC RIM EXCHANGE BURSARY	CR	500.00
12900	S.DURAND/CAREER DEVELOPMENT BURSARY	CR	500.00
12901	CARIHI IN/OUT	CR	43,000.41
12902	CARIHI IN/OUT ACCOUNT	CR	55,167.73
12914	INTERNATIONAL IN-1441/NEYNABER, JULIE	CR	300.00
12916	INTERNATIONAL IN-1429	CR	11,900.00
12903	MEAGHAN LOGUE	CR	35.00
12915	INTERNATIONAL IN-1443/M.LOPEZ JOAN	CR	300.00
12904	SOPHIE ARBORE BUECKERT	CR	35.00
12905	DAVID CARLOS-STRATHCONA GARDENS PASS	CR	105.00
12906	CARIHI IN/OUT	CR	45,211.79
12907	ROBRON CENTRE IN/OUT	CR	37.19
12908	SANDOWNE IN/OUT	CR	13,613.01
12909	ABC RECYCLING-BRASS-COPPER	CR	572.82
12917	OPERATING GRANT	CR	2,859,704.00
12918	PRP REGULAR SCHOOL	CR	17,412.00
12919	INTERNATIONAL IN-1437/NIEMANN, J.B.J.	CR	13,425.00
12910	CEDAR IN/OUT	CR	928.09
12911	TIMBERLINE IN/OUT	CR	7,426.35
12912	TIMBERLINE IN/OUT	CR	8,200.95
12939	TRANSFER FROM GENERAL TO PAYROLL ACCOUNT	CR	138.80
12913	MOSAIC FOREST MGMT SCHOLARSHIP/E.JOYCE	CR	1,000.00
12935	INTERNATIONAL IN-1446	CR	300.00
12922	WCB-WILLIAM DEAGLE NOV 7-NOV 13, 2022	CR	256.17
12923	WCB/CINDY BROWN NOV 21-NOV 27, 2022	CR	882.20
12924	WCB-ROBYNNE FRASER NOV 21-DEC 4, 2022	CR	2,516.90
12936	INTERNATIONAL IN-1440, BRAND, FELIX	CR	13,102.62
12937	INTERNATIONAL IN-1448-BRAUN, JETTE LENA	CR	300.00
12925	DANIELLE CRYDERMAN (LEMIRE)	CR	35.00
12928	CEF OVERHEAD	CR	29,166.00
12929	LEARNING IMPROVEMENT FUND	CR	20,643.00
12930	OPERATING GRANT	CR	2,865,564.00
12931	CEF STAFFING	CR	325,125.00
12932	COMMUNITY LINK	CR	55,105.00
12933	PAY EQUITY	CR	2,463.00
12938	INTERNATIONAL IN-1449-HAESSLET V.GEORG	CR	300.00
609178	BC TEACHERS' FEDERATION	CRAR	6,567.60
609179	MULTICULTURAL/IMMIGRANT SERV.	CRAR	416.43



	RECEIVED FROM		AMOUNT
609181	MINISTRY OF CITIZENS SERVICES	CRAR	957.20
609174	PACIFICCARE FAMILY ENRICHMENT	CRAR	130.72
609175	WARDROPE, TRACEY	CRAR	420.00
609176	QUADRA RECREATION SOCIETY	CRAR	399.00
609177	NORTH ISLAND CUBS	CRAR	52.50
609182	KIDSCOVE CHILDCARE	CRAR	262.50
609194	SCHOOL DISTRICT NO 93	CRAR	3,300.00
609183	CR COMMUNITY LITERACY ASSOC.	CRAR	30.98
609184	CR COMMUNITY LITERACY ASSOC.	CRAR	261.06
609185	NORTH ISLAND METIS ASSOCIATION	CRAR	563.49
609186	CRDTA	CRAR	9,959.92
609187	BC PRINCIPALS' &	CRAR	426.15
609188	CUPE 723	CRAR	4,747.91
609189	DISCOVERY COMMUNITY COLLEGE	CRAR	251.51
609190	DISCOVERY COMMUNITY COLLEGE	CRAR	1,389.50
609191	CR COMMUNITY BAND	CRAR	23.63
609192	CRDTA	CRAR	92.17
609193	DISCOVERY COMMUNITY COLLEGE	CRAR	1,389.50
609195	CRUSH VOLLEYBALL	CRAR	530.25
609196	CRUSH VOLLEYBALL	CRAR	477.75
609197	NATIONAL FILM BOARD OF CANADA	CRAR	751.02
609198	BC TEACHERS' FEDERATION	CRAR	2,012.03
EFT	BENEFIT PAYROLL RUNS		2,684.09
	PAYROLL REVERSAL		0.00
	US INTEREST		30.20
	US RETURNED PAYMENT		-
	SUMMER TRUST INTEREST		1,562.19
			6,501,225.25

Cheque No.	Date	Type	Supplier Name	Amount
59047	12/07/22	CANCK	AUTISM AWARENESS CENTRE INC	4,305.00
59048	12/07/22	CANCK	EDUCATIONAL PARTNERSHIP FOUND	281.67
59049	12/07/22	CANCK	ROYAL CANADIAN LEGION	50.00
59050	12/13/22	CANCK	ALBERTA HEALTH SERVICES	1,000.00
59051	12/13/22	CANCK	BUREAU VERITAS CANADA 2019 INC	1,376.55
59052	12/13/22	CANCK	CHATTERTON, ANNA	500.00
59053	12/13/22	CANCK	DURAND, STIAAN	1,000.00
59054	12/13/22	CANCK	FEDERAL EXPRESS CANADA LTD.	35.26
59055	12/13/22	CANCK	FOLDESI, ORSI	160.00
59056	12/13/22	CANCK	GLOBAL INDUSTRIAL CANADA	147.03
59057	12/13/22	CANCK	LAVIGNE, HEATHER	454.98
59058	12/13/22	CANCK	N.V.I VOLLEY BALL REFEREES	1,740.60
59059	12/13/22	CANCK	ROBINSON'S PIANO SERVICE	505.00
59060	12/13/22	CANCK	ROYKO, ROCKFORD	234.00
59061	12/13/22	CANCK	SPORTS EXPERTS	1,528.80
59062	12/13/22	CANCK	TOBII DYNAVOX CANADA INC.	3,671.33
59063	12/13/22	CANCK	VANCOUVER PUBLIC EDU ALLIANCE	2,086.87
59064	12/13/22	CANCK	W.P. BRAZILIAN JIU-JITSU	1,200.00
59065	12/13/22	CANCK	WEI WAI KUM FIRST NATION	5,369.95
59066	12/13/22	CANCK	WORLD'S FINEST CHOCOLATE	7,019.25
59067	12/13/22	CANCK	PACIFIC BLUE CROSS	52,016.31
59068	12/20/22	CANCK	ARRUDA, MICHAELA	900.00
59069	12/20/22	CANCK	BEACH CLUB RESORT	687.75
59070	12/20/22	CANCK	ELLINGSEN, LAURA	1,050.00
59071	12/20/22	CANCK	ELLISON TRAVEL & TOURS LTD	6,000.00
59072	12/20/22	CANCK	FILTRATION GROUP IAQ BC	11,118.09
59073	12/20/22	CANCK	FUJITSU CONSULTING CANADA INC	550.73
59074	12/20/22	CANCK	GLOBAL INDUSTRIAL CANADA	972.41
59075	12/20/22	CANCK	HENDERSON, MAGGIE	1,200.00
59076	12/20/22	CANCK	ISLAND DEAF & HARD OF HEARING	136.50
59077	12/20/22	CANCK	LARGE, LISA	700.00
59078	12/20/22	CANCK	LEE, BIANCA	350.00
59079	12/20/22	CANCK	MISKOLZIE, MNIC	350.00
59080	12/20/22	CANCK	NORTH ISLAND METIS NATION	1,000.00
59081	12/20/22	CANCK	OK TIRE AND AUTO SERVICE	1,900.28
59082	12/20/22	CANCK	PILON TOOL	3,046.39
59083	12/20/22	CANCK	QUADRA PARENT ADVISORY COUNCIL	139.42
59084	12/20/22	CANCK	STUDICA LTD	2,280.84
59085	12/20/22	CANCK	THACKER, REBECCA	1,400.00
59086	12/20/22	CANCK	WEI WAI KUM FIRST NATION	50.00
59087	12/20/22	CANCK	WORLD'S FINEST CHOCOLATE	4,252.50
31099	12/07/22	DIRDP	A.C.E. COURIER SERVICES	28.35
31100	12/07/22	DIRDP	BAILEY WESTERN STAR TRUCKS INC	191.80
31101	12/07/22	DIRDP	BERES, DEBORAH	302.01
31102	12/07/22	DIRDP	CITY OF CAMPBELL RIVER	3,810.00
31103	12/07/22	DIRDP	COLUMBIA FUELS	1,331.84
31104	12/07/22	DIRDP	DECLAN INDUSTRIES INC	24.95
31105	12/07/22	DIRDP	DISCOVERY LAUNCH (1998) LTD.	630.21
31106	12/07/22	DIRDP	E.B. HORSMAN & SON	2,009.48
31107	12/07/22	DIRDP	GAGE, KELLY L.	447.86
31108	12/07/22	DIRDP	GFL ENVIRONMENTAL	327.60
31109	12/07/22	DIRDP	GUILLEVIN INTERNATIONAL INC.	434.42
31110	12/07/22	DIRDP	HATFIELD, ROBERT B.	814.62
31111	12/07/22	DIRDP	HWANG, NANCY S.	487.80
31112	12/07/22	DIRDP	INTEGRAL GROUP CONSULTING	2,857.52
31113	12/07/22	DIRDP	KAL TIRE	1,017.52
31114	12/07/22	DIRDP	KONICA MINOLTA PREMIER FINANCE	572.71
31115	12/07/22	DIRDP	KRELL, JOLENE	426.05

Cheque No.	Date	Type	Supplier Name	Amount
31116	12/07/22	DIRDP	LAKELAND AUTOMOTIVE LTD.	1,948.69
31117	12/07/22	DIRDP	MID ISLAND CO-OP	230.00
31118	12/07/22	DIRDP	MIDDLETON, CHRISTINE P.	1,108.11
31119	12/07/22	DIRDP	MSH INTERNATIONAL (CANADA)LTD	14,480.60
31120	12/07/22	DIRDP	NELSON, RACHEL I.	3,431.41
31121	12/07/22	DIRDP	NOHR, MICHELLE D.	528.33
31122	12/07/22	DIRDP	OHS TECHNOLOGIES	2,688.00
31123	12/07/22	DIRDP	PANZIERA, LOUISE	411.58
31124	12/07/22	DIRDP	PATRICK, KEVIN W.	64.00
31125	12/07/22	DIRDP	PENINSULA CO-OP	172.78
31126	12/07/22	DIRDP	QUADIENT CANADA LTD	128.80
31127	12/07/22	DIRDP	RICHELIEU	131.89
31128	12/07/22	DIRDP	RITCHIE, ANDREA M.	341.61
31129	12/07/22	DIRDP	RUEHLEN, LAIRD M.	1,730.72
31130	12/07/22	DIRDP	SCHOOL DISTRICT NO. 71 COMOX	5,210.98
31131	12/07/22	DIRDP	SHAW CABLE	800.80
31132	12/07/22	DIRDP	SOUTHSIDE WELDING LTD.	174.90
31133	12/07/22	DIRDP	SQUIRREL COVE TRADING	361.40
31134	12/07/22	DIRDP	STRATHCON INDUSTRIES	57.58
31135	12/07/22	DIRDP	SUMMIT CUSTOM BROKERS	112.82
31136	12/07/22	DIRDP	SUPERIOR PROPANE INC.	583.60
31137	12/07/22	DIRDP	TAPESTRY MUSIC LTD.	4,614.40
31138	12/07/22	DIRDP	TAYLOR, KAI	823.16
31139	12/07/22	DIRDP	TERAMURA, RHONDA	81.00
31140	12/07/22	DIRDP	TK ELEVATOR (CANADA) LIMITED	3,729.58
31141	12/07/22	DIRDP	VINING, LORILL D.	1,830.35
31142	12/07/22	DIRDP	WILKEN, BRENT F.	320.18
31143	12/07/22	DIRDP	ZLATANOV, JAMES D.	69.00
31144	12/13/22	DIRDP	A.C.E. COURIER SERVICES	108.85
31145	12/13/22	DIRDP	ADAM'S TARP & TOOL	313.55
31146	12/13/22	DIRDP	ANDERSON, LISA R.	100.00
31147	12/13/22	DIRDP	APPLE CANADA	469.28
31148	12/13/22	DIRDP	ASHURST, JAIMIE R.	501.89
31149	12/13/22	DIRDP	BAGLEY, FERGUS	1,940.45
31150	12/13/22	DIRDP	BC PUBLIC SCHOOL EMPLOYERS'	1,732.50
31151	12/13/22	DIRDP	BECKETT, JENNIFER	70.00
31152	12/13/22	DIRDP	BOUEY, CALEB C.	106.52
31153	12/13/22	DIRDP	BOYD, LUCIA P.	200.00
31154	12/13/22	DIRDP	CARIHI SECONDARY SCHOOL	12,781.24
31155	12/13/22	DIRDP	CARMAC DIESEL LTD.	3,110.75
31156	12/13/22	DIRDP	CEDAR ELEMENTARY SCHOOL	1,397.37
31157	12/13/22	DIRDP	COLUMBIA FUELS	16,245.75
31158	12/13/22	DIRDP	COUTTENIER, JOY E.	748.79
31159	12/13/22	DIRDP	CRAWSHAW, NATALIE	117.49
31160	12/13/22	DIRDP	DAVIS, DAYNA	28.92
31161	12/13/22	DIRDP	DROLET, SUE M.	100.00
31162	12/13/22	DIRDP	DUKETOW, CHRISTINE M.	110.13
31163	12/13/22	DIRDP	E.B. HORSMAN & SON	505.54
31164	12/13/22	DIRDP	ECOLE DES DEUX MONDES	727.88
31165	12/13/22	DIRDP	ECOLE PHOENIX MIDDLE SCHOOL	3,573.03
31166	12/13/22	DIRDP	ECOLE WILLOW POINT ELEMENTARY	1,096.03
31167	12/13/22	DIRDP	EDDY, KAT	841.80
31168	12/13/22	DIRDP	EVERITT, VICKI	250.00
31169	12/13/22	DIRDP	EWING, BRENNAN	65.00
31170	12/13/22	DIRDP	FARRELL, DANICA B.	114.42
31171	12/13/22	DIRDP	FRASER, CHRISTINE	90.00
31172	12/13/22	DIRDP	GABEREL, MELINDA	62.62
31173	12/13/22	DIRDP	GEORGIA PARK ELEMENTARY	848.03
31174	12/13/22	DIRDP	GERMYN, JENACA	103.95

Cheque No.	Date	Type	Supplier Name	Amount
31175	12/13/22	DIRDP	GRAND & TOY	787.68
31176	12/13/22	DIRDP	GREEN ROOTS PLAY EQUIPMENT INC	164,964.45
31177	12/13/22	DIRDP	HAYDUK, MERCEDES	3,123.78
31178	12/13/22	DIRDP	HILCAM TROPHIES & PROMOTIONS	65.58
31179	12/13/22	DIRDP	HORSTHUIS, CATHERINE Y.	100.00
31180	12/13/22	DIRDP	HOW, LESLEY J.	700.00
31181	12/13/22	DIRDP	HUMPHREYS, ANDREA	100.00
31182	12/13/22	DIRDP	ISLAND IMAGING SUPPLIES	140.00
31183	12/13/22	DIRDP	JAMES, ALEC G.	936.99
31184	12/13/22	DIRDP	JONASSEN, SHANNON L.	11.20
31185	12/13/22	DIRDP	JORGENSEN, ALANA M.	631.55
31186	12/13/22	DIRDP	KIRKE, GILLIAN M.	354.47
31187	12/13/22	DIRDP	KYLE, MORGAN L.	771.91
31188	12/13/22	DIRDP	LALIBERTE, BRENDA	363.30
31189	12/13/22	DIRDP	LANG, JEREMIAH	33.00
31190	12/13/22	DIRDP	LAPOINTE-BAKOTA, DIONNE	671.85
31191	12/13/22	DIRDP	LEMIRE, DANIELLE A.	184.00
31192	12/13/22	DIRDP	LOGUE, MEAGHAN D.	153.90
31193	12/13/22	DIRDP	MANN, JESSICA	800.81
31194	12/13/22	DIRDP	MARTEL, DEBRA M.	175.02
31195	12/13/22	DIRDP	MONK OFFICE	4,980.46
31196	12/13/22	DIRDP	MORELAND, LORRAINE C.	77.53
31197	12/13/22	DIRDP	MORROW, JEREMY	1,106.51
31198	12/13/22	DIRDP	MORTIMER, ANGIE D.	111.75
31199	12/13/22	DIRDP	MUNSIE, MIKE	771.16
31200	12/13/22	DIRDP	MURPHY, ANGEL	690.28
31201	12/13/22	DIRDP	MURPHY, PAUL	933.05
31202	12/13/22	DIRDP	MURRAY, KALA R.	30.00
31203	12/13/22	DIRDP	NIXON, DAVID	2,415.00
31204	12/13/22	DIRDP	NORTH ISLAND COMMUNICATIONS	423.36
31205	12/13/22	DIRDP	OCEAN GROVE ELEMENTARY	2,534.87
31206	12/13/22	DIRDP	PACIFIC COASTAL PEST CONTROL	735.00
31207	12/13/22	DIRDP	PARADIS, JOHANNA	417.90
31208	12/13/22	DIRDP	PATRICK, KEVIN W.	576.45
31209	12/13/22	DIRDP	PEARSON EDUCATION CANADA	1,685.24
31210	12/13/22	DIRDP	PENFIELD ELEMENTARY SCHOOL	1,441.99
31211	12/13/22	DIRDP	PICKERING, ERIN M.	107.51
31212	12/13/22	DIRDP	PINECREST ELEMENTARY SCHOOL	172.32
31213	12/13/22	DIRDP	PIONEER HARDWARE LTD.	10,402.98
31214	12/13/22	DIRDP	POINTS WEST AUDIO VISUAL LTD.	2,106.93
31215	12/13/22	DIRDP	PRITCHARD, ERIKA	66.28
31216	12/13/22	DIRDP	QUADRA ELEMENTARY SCHOOL	1,750.00
31217	12/13/22	DIRDP	RAEDWULF POGUE, NATALIE C.	34.92
31218	12/13/22	DIRDP	RENNIE, KIM E.	100.00
31219	12/13/22	DIRDP	RICHELIEU	327.17
31220	12/13/22	DIRDP	RIPPLE ROCK ELEMENTARY	1,983.08
31221	12/13/22	DIRDP	ROBERTSON, DEANNA M.	145.85
31222	12/13/22	DIRDP	ROBRON CENTRE	1,767.14
31223	12/13/22	DIRDP	ROCHFORD, LOUISEL	1,833.71
31224	12/13/22	DIRDP	ROSE, STEVE	559.90
31225	12/13/22	DIRDP	RUEHLEN, DANA	100.00
31226	12/13/22	DIRDP	SAVERY, ANDREA R.	886.05
31227	12/13/22	DIRDP	SCHROEDER, AUDRA L.	78.75
31228	12/13/22	DIRDP	SEYMOUR SERVICES	3,890.67
31229	12/13/22	DIRDP	SHARE CANADA	214.87
31230	12/13/22	DIRDP	SORBA, KRISTYNA	75.00
31231	12/13/22	DIRDP	SOUTHGATE MIDDLE SCHOOL	1,070.45
31232	12/13/22	DIRDP	SOUTHSIDE WELDING LTD.	2,671.43
31233	12/13/22	DIRDP	SQUIRREL COVE TRADING	270.72

Cheque No.	Date	Type	Supplier Name	Amount
31234	12/13/22	DIRDP	ST. JOHN SOCIETY	858.20
31235	12/13/22	DIRDP	STAPLES	92.60
31236	12/13/22	DIRDP	STEVENS, TRACIE L.	29.00
31237	12/13/22	DIRDP	STORBACK, LEANNE G.	46.10
31238	12/13/22	DIRDP	STRATHCON INDUSTRIES	41.58
31239	12/13/22	DIRDP	STROMQUIST, STEPHANIE S.	410.00
31240	12/13/22	DIRDP	SUMMIT CUSTOM BROKERS	80.87
31241	12/13/22	DIRDP	SUPERIOR PROPANE INC.	10,635.57
31242	12/13/22	DIRDP	SUPERSTORE	277.12
31243	12/13/22	DIRDP	SYSKO VICTORIA	4,517.50
31244	12/13/22	DIRDP	TAPESTRY MUSIC LTD.	4,911.20
31245	12/13/22	DIRDP	TAVARES, JODY K.	178.26
31246	12/13/22	DIRDP	TEACHER'S FILE	158.76
31247	12/13/22	DIRDP	TELFORD, ROBERT M.	506.45
31248	12/13/22	DIRDP	TERAMURA, RHONDA	5,487.49
31249	12/13/22	DIRDP	THE SHERWIN-WILLIAMS CO.	53.15
31250	12/13/22	DIRDP	THEMES & VARIATIONS LTD.	800.02
31251	12/13/22	DIRDP	TIM HORTONS	1,556.37
31252	12/13/22	DIRDP	TIMBERLINE SECONDARY	4,434.07
31253	12/13/22	DIRDP	TOEWS, JULIE A.	277.48
31254	12/13/22	DIRDP	WAIBEL ENTERPRISES LTD.	1,638.00
31255	12/13/22	DIRDP	WASTE CONNECTIONS OF CANADA	754.95
31256	12/13/22	DIRDP	WESTERN CANADA BUS	188,774.88
31257	12/13/22	DIRDP	WILKEN, BRENT F.	266.11
31258	12/13/22	DIRDP	WILSON, LEAH M.	75.00
31259	12/13/22	DIRDP	WINDSOR PLYWOOD	713.86
31260	12/13/22	DIRDP	WURTH CANADA LIMITED	918.70
31261	12/13/22	DIRDP	AIG INSURANCE COMPANY CANADA	154.09
31262	12/13/22	DIRDP	BC PRINCIPALS' & VICE-PRINCI	3,129.68
31263	12/13/22	DIRDP	BC TEACHERS FEDERATION	59,586.33
31264	12/13/22	DIRDP	BC TEACHERS' FEDERATION	54,522.12
31265	12/13/22	DIRDP	CANADIAN UNION OF PUBLIC	20,037.25
31266	12/13/22	DIRDP	CANADIAN WESTERN TRUST	9,686.54
31267	12/13/22	DIRDP	CR & DISTRICT TEACHERS' ASSOC.	18,160.28
31268	12/13/22	DIRDP	CR PRINCIPALS & VICE-PRINCIPAL	1,450.00
31269	12/13/22	DIRDP	DESJARDINS INSURANCE	8,280.28
31270	12/13/22	DIRDP	INDUSTRIAL ALLIANCE INSURANCE	670.02
31271	12/13/22	DIRDP	MANULIFE	11,492.38
31272	12/13/22	DIRDP	SCHOOL BOARD OFFICE STAFF FUND	240.00
31273	12/20/22	DIRDP	A.C.E. COURIER SERVICES	33.57
31274	12/20/22	DIRDP	ADDISON, RACHELLE A.	45.49
31275	12/20/22	DIRDP	AINEY, SHELLEY	350.00
31276	12/20/22	DIRDP	ALBRECHT, FIORELLA	570.00
31277	12/20/22	DIRDP	ANDREWS, KIRSTEN S.	55.05
31278	12/20/22	DIRDP	ANDREWS, VICKY	1,100.00
31279	12/20/22	DIRDP	APPLE CANADA	2,288.72
31280	12/20/22	DIRDP	ARMITAGE, DEREK K.	350.00
31281	12/20/22	DIRDP	ATKINSON, JENNIFER L.	1,800.00
31282	12/20/22	DIRDP	BADGER, CHELSEA E.	900.00
31283	12/20/22	DIRDP	BAUTZ, JANICE	282.14
31284	12/20/22	DIRDP	BC HYDRO & POWER AUTHORITY	84,349.53
31285	12/20/22	DIRDP	BELL, ANGIE M.	62.92
31286	12/20/22	DIRDP	BERNIER, ALEXANDRE	350.00
31287	12/20/22	DIRDP	BILLOWS, VERONICA	97.41
31288	12/20/22	DIRDP	BISHOP, JOANNE L.	59.07
31289	12/20/22	DIRDP	BLANCHARD SECURITY	693.00
31290	12/20/22	DIRDP	BROADLEY, NEIL	1,800.00
31291	12/20/22	DIRDP	BUNZL CLEANING & HYGIENE	148.83
31292	12/20/22	DIRDP	BURGESS, GERRY	300.00

Cheque No.	Date	Type	Supplier Name	Amount
31293	12/20/22	DIRDP	CAMP HOMEWOOD	500.00
31294	12/20/22	DIRDP	CARON, ALANAH	700.00
	12/21/22	DIRDP	WRONG BANK INFORMATION-EFT	(700.00)
31295	12/20/22	DIRDP	CARRIERE, LORRAINE J.	40.81
31296	12/20/22	DIRDP	CHAMBERLAIN, KELTIE	900.00
31297	12/20/22	DIRDP	CHE, EMMA	615.00
31298	12/20/22	DIRDP	CITY OF CAMPBELL RIVER	1,565.00
31299	12/20/22	DIRDP	CIZMIC, PHILIP V.	3,231.32
31300	12/20/22	DIRDP	CLOVERDALE PAINT	677.18
31301	12/20/22	DIRDP	CLUTCH SOLUTIONS CANADA INC	1,510.88
31302	12/20/22	DIRDP	COLUMBIA FUELS	18,710.49
31303	12/20/22	DIRDP	COLUMBIA ICE	44.85
31304	12/20/22	DIRDP	COUTTENIER, JOHAN C.	773.79
31305	12/20/22	DIRDP	COWLEY, TRACEY	900.00
31306	12/20/22	DIRDP	CR LAUNDROMAT	100.50
31307	12/20/22	DIRDP	CRAWSHAW, NATALIE	465.00
31308	12/20/22	DIRDP	DAVIS, DAYNA	250.10
31309	12/20/22	DIRDP	DECLAN INDUSTRIES INC	100.80
31310	12/20/22	DIRDP	DEVRY GREENHOUSES LTD	3,764.99
31311	12/20/22	DIRDP	DOHERTY, BRENDA	900.00
31312	12/20/22	DIRDP	DOLPHIN, KALYAN	1,800.00
31313	12/20/22	DIRDP	DUARTE, JULINA L.	1,800.00
31314	12/20/22	DIRDP	DYER, PATRICIA E.	408.06
31315	12/20/22	DIRDP	E.B. HORSMAN & SON	790.23
31316	12/20/22	DIRDP	EARL, LORINDA	1,800.00
31317	12/20/22	DIRDP	FAIR, NEVENKA	823.16
31318	12/20/22	DIRDP	FIELD, SUZANNE	900.00
31319	12/20/22	DIRDP	FOREST, DANIEL	1,800.00
31320	12/20/22	DIRDP	FORTISBC-NATURAL GAS	75,824.05
31321	12/20/22	DIRDP	FOWLER, CATHY C.	727.04
31322	12/20/22	DIRDP	GALLAGHER, JOLENE	179.74
31323	12/20/22	DIRDP	GIGIEL, KATE J.	74.36
31324	12/20/22	DIRDP	GLOBALSTAR INC.	1,612.80
31325	12/20/22	DIRDP	GORDON, JEANNE M.	28.54
31326	12/20/22	DIRDP	GRAND & TOY	993.08
31327	12/20/22	DIRDP	GREENWOOD, DAVID	900.00
31328	12/20/22	DIRDP	GREGORY, ALLISON	700.00
31329	12/20/22	DIRDP	GUILLEVIN INTERNATIONAL INC.	94.06
31330	12/20/22	DIRDP	GUY, JODI	13.75
31331	12/20/22	DIRDP	HAGEN, SHANNON L.	253.66
31332	12/20/22	DIRDP	HARTZ, TOM	675.00
31333	12/20/22	DIRDP	HAUGEN, SHANNON	900.00
31334	12/20/22	DIRDP	HAWKINS-BOGLE, DENNIS P.	847.16
31335	12/20/22	DIRDP	HAWKINS-BOGLE, STEPHEN R.	69.00
31336	12/20/22	DIRDP	HAYDUK, MERCEDES	362.04
31337	12/20/22	DIRDP	HEADLEY, JENNA LEE	900.00
31338	12/20/22	DIRDP	HENRY, KELLY	1,800.00
31339	12/20/22	DIRDP	HONSBERGER, KATRINA	1,800.00
31340	12/20/22	DIRDP	HURD, DUNCAN	900.00
31341	12/20/22	DIRDP	HUTTON, CAROLYN	500.00
31342	12/20/22	DIRDP	ISLAND IMAGING SUPPLIES	744.80
31343	12/20/22	DIRDP	ISLAND OVERHEAD DOOR (1979)	270.64
31344	12/20/22	DIRDP	JEWELL, TINA	900.00
31345	12/20/22	DIRDP	JOHNSON, TAMI J.	41.20
31346	12/20/22	DIRDP	JOHNSTON, SADHU AUFOCHS	2,300.00
31347	12/20/22	DIRDP	JPJ ATHLETICS AND REPAIRS	1,115.11
31348	12/20/22	DIRDP	KAL TIRE	179.81
31349	12/20/22	DIRDP	KERLUCK, JASON	468.45
31350	12/20/22	DIRDP	KIM, GUMLIM	700.00

Cheque No.	Date	Type	Supplier Name	Amount
31351	12/20/22	DIRDP	KIRKE, GILLIAN M.	138.73
31352	12/20/22	DIRDP	KLEIN, PAUL D.	900.00
31353	12/20/22	DIRDP	KNOX, GEORGINA E.	293.31
31354	12/20/22	DIRDP	KOBAYASHI, JENNIFER OR JEFF	1,800.00
31355	12/20/22	DIRDP	KOLBEINS, NANCY	900.00
31356	12/20/22	DIRDP	KOZUKI, KIMBERLEY A.	1,930.91
31357	12/20/22	DIRDP	KRELL, JOLENE	195.00
31358	12/20/22	DIRDP	KULESH, LELA	900.00
31359	12/20/22	DIRDP	LAFFLING, SHERRY	900.00
31360	12/20/22	DIRDP	LAKELAND AUTOMOTIVE LTD.	391.43
31361	12/20/22	DIRDP	LANE 8 DELIVERY SERVICES	309.75
31362	12/20/22	DIRDP	LANE, DENISE	900.00
31363	12/20/22	DIRDP	LARMOUR, BRENT T.	211.35
31364	12/20/22	DIRDP	LAZELL, SASHA	900.00
31365	12/20/22	DIRDP	LEE, SOPHIA	900.00
31366	12/20/22	DIRDP	LESSARD, LINDA T.	539.23
31367	12/20/22	DIRDP	LITKE, MELISSA A.	66.70
31368	12/20/22	DIRDP	LOOCK, SHYLO	900.00
31369	12/20/22	DIRDP	LUTZ, KAREN M.	200.00
31370	12/20/22	DIRDP	MACDONALD, KIM	1,800.00
31371	12/20/22	DIRDP	MACFARLANE, JANA L.	1,300.00
31372	12/20/22	DIRDP	MADDIGAN, KATE	2,300.00
31373	12/20/22	DIRDP	MAKE A FUTURE	3,472.65
31374	12/20/22	DIRDP	MANSON, CATHY	2,379.97
31375	12/20/22	DIRDP	MARRIOTT, TRACY L.	900.00
31376	12/20/22	DIRDP	MAXWELL, SANDRA L.	59.57
31377	12/20/22	DIRDP	MCCABE, BRIGITTE	15.95
31378	12/20/22	DIRDP	MCCAY, KELLY	900.00
31379	12/20/22	DIRDP	MCCREITH, TANYA	732.09
31380	12/20/22	DIRDP	MCREE, SHANTALL	1,120.00
31381	12/20/22	DIRDP	MCMANN, JOYCE I.	659.67
31382	12/20/22	DIRDP	MID ISLAND CO-OP	450.01
31383	12/20/22	DIRDP	MILLER, DOROTHY H.	142.09
31384	12/20/22	DIRDP	MONK OFFICE	2,737.41
31385	12/20/22	DIRDP	MURPHY, TARA L.	363.39
31386	12/20/22	DIRDP	NETZEL, MARIA	900.00
31387	12/20/22	DIRDP	NOHR, MICHELLE D.	223.75
31388	12/20/22	DIRDP	PACIFIC COASTAL PEST CONTROL	105.00
31389	12/20/22	DIRDP	PANZIERA, LOUISE	409.83
31390	12/20/22	DIRDP	PATRICK, JENNIFER L.	328.82
31391	12/20/22	DIRDP	PENINSULA CO-OP	157.99
31392	12/20/22	DIRDP	PLAMONDON, SARA	2,700.00
31393	12/20/22	DIRDP	POLLITT, JO	143.96
31394	12/20/22	DIRDP	POSLOWSKY, SHARLENE	1,800.00
31395	12/20/22	DIRDP	PRESTON, KELLY	900.00
31396	12/20/22	DIRDP	QUADIENT CANADA LTD	13.48
31397	12/20/22	DIRDP	QUINN, JANET C.	105.57
31398	12/20/22	DIRDP	QUINSAM RADIO COMMUNICATIONS	2,744.00
31399	12/20/22	DIRDP	REHABCO SERVICES	1,478.00
31400	12/20/22	DIRDP	RENSBY, KRISTI	900.00
31401	12/20/22	DIRDP	RIDGELINE MECHANICAL LIMITED	22,133.99
31402	12/20/22	DIRDP	RIVER INK PRINTING & SIGNS LTD	1,759.46
31403	12/20/22	DIRDP	ROGERS WIRELESS INC.	2,136.30
31404	12/20/22	DIRDP	RUSICK, SCOTT	140.00
31405	12/20/22	DIRDP	SANDOWNE ELEMENTARY SCHOOL	992.96
31406	12/20/22	DIRDP	SCHOOL DISTRICT NO. 71 COMOX	5,175.94
31407	12/20/22	DIRDP	SCHOPP, ANDREW R.	203.12
31408	12/20/22	DIRDP	SCHROEDER, AUDRA L.	369.68
31409	12/20/22	DIRDP	SHEA, JOLIE M.	190.00

Cheque No.	Date	Type	Supplier Name	Amount
31410	12/20/22	DIRDP	SHEMKO, DANI	113.71
31411	12/20/22	DIRDP	SHERIFF, SHELLY	23.44
31412	12/20/22	DIRDP	SOUCH, DAN	350.00
31413	12/20/22	DIRDP	SOUTHGATE MIDDLE SCHOOL	175.00
31414	12/20/22	DIRDP	ST. JOHN SOCIETY	184.55
31415	12/20/22	DIRDP	STANSELL, DEBBIE	380.00
31416	12/20/22	DIRDP	STAPLES	1,628.85
31417	12/20/22	DIRDP	STEPHENS, TIA K.	900.00
31418	12/20/22	DIRDP	STEVENS, KIMBERLEY	900.00
31419	12/20/22	DIRDP	STIRRETT, LINDA	350.63
31420	12/20/22	DIRDP	STIX, KIM F.	55.38
31421	12/20/22	DIRDP	STRATHCON INDUSTRIES	143.44
31422	12/20/22	DIRDP	SUMMIT CUSTOM BROKERS	46.30
31423	12/20/22	DIRDP	SUPERIOR PROPANE INC.	9,267.27
31424	12/20/22	DIRDP	SWANSON, ALEXIS	900.00
31425	12/20/22	DIRDP	TAPESTRY MUSIC LTD.	224.00
31426	12/20/22	DIRDP	TEACHER'S FILE	201.39
31427	12/20/22	DIRDP	TECHNICAL SAFETY BC	171.00
31428	12/20/22	DIRDP	TELUS	1,983.06
31429	12/20/22	DIRDP	TERAMURA, RHONDA	900.00
31430	12/20/22	DIRDP	THE SHERWIN-WILLIAMS CO.	550.34
31431	12/20/22	DIRDP	THINKTEL COMMUNICATIONS	1,865.91
31432	12/20/22	DIRDP	THOMAS, SARAH	1,800.00
31433	12/20/22	DIRDP	THOMPSON, ALANA	907.26
31434	12/20/22	DIRDP	THOMPSON, ASHLEY Y.	900.00
31435	12/20/22	DIRDP	THURLBORN-HANSEN, KEEGAN J.	900.00
31436	12/20/22	DIRDP	TK ELEVATOR (CANADA) LIMITED	385.79
31437	12/20/22	DIRDP	TONKIN, CHRISTINE E.	9.12
31438	12/20/22	DIRDP	TURKSTRA, JONATHAN	900.00
31439	12/20/22	DIRDP	VINING, LORILL D.	1,226.81
31440	12/20/22	DIRDP	VOWLES-BIEGLER, DENISE	900.00
31441	12/20/22	DIRDP	VOWLES, COLEEN	900.00
31442	12/20/22	DIRDP	WESTERN CANADA BUS	188,774.88
31443	12/20/22	DIRDP	WHITE, JAYNE	60.00
31444	12/20/22	DIRDP	WHITE'S DIESEL POWER & MARINE	1,182.65
31445	12/20/22	DIRDP	WILKEN, BRENT F.	376.02
31446	12/20/22	DIRDP	WILSON, AMANDA	156.24
31447	12/20/22	DIRDP	WILSON, LEAH M.	708.83
31448	12/20/22	DIRDP	WOLOSHYN, GAYLE	39.73
31449	12/20/22	DIRDP	WOOD, HEATHER	1,800.00
31450	12/20/22	DIRDP	WURTH CANADA LIMITED	1,210.32
2045	12/01/22	MANCK	NOVEMBER PAYROLL TRF	3,085,314.76
2051	12/06/22	MANCK	ACTIVITY FEES-NOV 2022	1,140.01
2052	12/02/22	MANCK	SCHUL-UND STUDIENBERATUNG/K. H	1,987.50
2053	12/02/22	MANCK	FERNZIELE-ANDREA LUEDDEKEINV#2	3,997.50
2054	12/02/22	MANCK	TLT EDUCATION S.L.-INV#ES118/2	7,950.00
2055	12/13/22	MANCK	ROYAL BANK VISA	9,922.36
2061	12/19/22	MANCK	ROYAL BANK VISA	12.00
2062	12/16/22	MANCK	BANK FEES IN-1437 KULTURWERKE-	17.00
2064	12/14/22	MANCK	BC EHT REMITTANCE JULY 1-SEPT	246,700.65
2065	12/16/22	MANCK	TRF TO SUMMER SAVINGS	215,314.44
2074	12/09/22	MANCK	RETURN PAYROLL DEC 9/22 & DEC	0.00
2046	12/05/22	MANCK	TTOC 111522 PR DUE 120522	31,832.22
2047	12/05/22	MANCK	CUPE 111922 PR DUE 120522	133,358.80
2048	12/05/22	MANCK	ADMIN 113022 PR DUE 120522	64,301.80
2049	12/05/22	MANCK	TEACH 113022 PR DUE 120522	308,367.26



Cheque No.	Date	Type	Supplier Name	Amount
2050	12/06/22	MANCK	TTOC 112222 PR DUE 120622	20,835.88
2056	12/09/22	MANCK	CUPE 112522 PR DUE 120922	82,654.85
2057	12/14/22	MANCK	ADMIN 113022 PR DUE 121422	10,132.76
2058	12/14/22	MANCK	ADMIN 113022 PR DUE 121422	40,539.46
2059	12/14/22	MANCK	TEACH 113022 PR DUE 121422	676,259.63
2060	12/19/22	MANCK	CUPE 120322 PR DUE 121922	127,294.44
2063	12/12/22	MANCK	TTOC 113022 PR DUE 121222	28,500.17
2066	12/21/22	MANCK	TTOC 120722 PR DUE 122122	18,832.87
2067	12/28/22	MANCK	ADMIN 121522 PR DUE 122822	1,552.87
2068	12/28/22	MANCK	ADMIN 121522 PR DUE 122822	58,376.69
2069	12/28/22	MANCK	TEACH 123122 PR DUE 122322	599,016.00
2070	12/28/22	MANCK	ADMIN 121522 PR DUE 122822	9,692.50
2071	12/28/22	MANCK	ADMIN MULTI PVR 121522 PR DUE	41,328.28
2072	12/28/22	MANCK	TEACH 121522 PR DUE 122822	697,027.40
2073	12/23/22	MANCK	CUPE 120922 PR DUE 122322	80,793.80
<b>Cdn \$Currency Total</b>				<b>8,017,437.37</b>
			US Dollars	7,608.00
<b>US \$ Currency Total</b>				<b>7,608.00</b>
<b>Grand Total</b>				<b>8,025,045.37</b>

PDUM1							
PROG - CSD.501		SCHOOL DISTRICT NO 72 (CAMPBELL RIVER)				Page 1	
DATE - 1/18/23		Public Disclosure Report Details					
TIME - 10:59:05		DEC01/22 to DEC31/22					
Employee	Vendor	Invoice	Inv Date	Pub Date	P/O	Object	Pub Amount
Briggs, Shannon	18000229	011123	DEC04/22	DEC04/22	PO301	3410	78.40
		DEC INTERNET					
Briggs, Shannon	18000229	011123	DEC13/22	DEC13/22	PO301	3430	97.60
		MILEAGE					
		Employee Total		176.00			
Eddy, Kat	18000228	120522	DEC05/22	DEC05/22	PO301	3420	168.20
		FERRT					
Eddy, Kat	18000228	120522	DEC05/22	DEC05/22	PO301	3430	207.40
		MILEAGE					
Eddy, Kat	18000228	120522	DEC05/22	DEC05/22	PO301	3450	81.00
		MEAL ALLOWANCE					
Eddy, Kat	18000228	120522	DEC05/22	DEC05/22	PO301	3490	235.20
		CELL PHONE					
Eddy, Kat	18000228	40284	DEC15/22	DEC15/22	PO301	3410	719.25
		BCSTA ACADEMY/REGISTRATION					
		Employee Total		1,411.05			
Hagen, Daryl W.	3405	40284	DEC15/22	DEC15/22	PO301	3410	719.25
		BCSTA ACADEMY/REGISTRATION					
		Employee Total		719.25			
McMann, Joyce I.	80248	120622	DEC06/22	DEC06/22	PO301	3420	573.67
		AIRFAIR/TAXI					
McMann, Joyce I.	80248	120622	DEC06/22	DEC06/22	PO301	3450	86.00
		MEAL ALLOWANCE					
McMann, Joyce I.	80248	40284	DEC15/22	DEC15/22	PO301	3410	719.25
		BCSTA ACADEMY/REGISTRATION					
		Employee Total		1,378.92			
Morrow, Jeremy	90055	121222	DEC12/22	DEC12/22	PO301	3430	54.90
		MILEAGE					
Morrow, Jeremy	90055	121222	DEC12/22	DEC12/22	PO301	3450	55.00
		MEAL ALLOWANCE					
Morrow, Jeremy	90055	40284	DEC15/22	DEC15/22	PO301	3410	719.25
		BCSTA ACADEMY/REGISTRATION					
Morrow, Jeremy	90055	2879284 12227235-KP	DEC20/22	DEC20/22	PO301	3420	55.00
		TAXI TO AIRPORT					
		Employee Total		884.15			
Patrick, Kevin W.	50020	40284	DEC15/22	DEC15/22	PO301	3410	719.25
		BCSTA ORIENTATION/ACADEMY					
Patrick, Kevin W.	50020	2879284 12227235-KP	DEC20/22	DEC20/22	PO301	3420	55.00
		TAXI TO AIRPORT					
Patrick, Kevin W.	50020	2879284 12227235-KP	DEC20/22	DEC20/22	PO301	3450	332.41
		DINNER					
		Employee Total		1,106.66			
		Grand Total		5,676.03			

**School District No. 72 (Campbell River)  
Financial Report: First Quarter  
Period Ending December 31, 2022**

**Table of Contents**

**A. Statement of Revenue and Expenses (Summary) ..... 2**

**B. Statement of Budgeted Expenditures (Summary) ..... 3**

**C. Instruction Budgets ..... 4**

**D. Administration Budgets ..... 6**

**E. Maintenance and Operations ..... 8**

**F. Transportation ..... 10**

*Overall the budgets are not overspent to approved amounts*

*There is a structural deficit continuing for the current year.*

**School District No. 72 (Campbell River)**  
**Statement of Revenue and Expenses**  
**For the 6 Months Ended December 31, 2022**

	<b>2022/23 Budget Preliminary</b>	<b>Budget YTD</b>	<b>Actual YTD</b>	<b>YTD to Actual %</b>	<b>Under (Over) Budget \$\$</b>	<b>Budget %</b>
<b>Revenues</b>						
Ministry of Education Operating Grant	58,601,241	23,440,496	23,826,962	102%	(386,466)	-1.65% a
Ministry of Education Other Grants	464,742	185,897	243,906	131%	(58,009)	-31.21% b
First Nations	2,046,112	818,445	813,092	99%	5,353	0.65% a
North Island College	144,000	72,000	68,400	95%	3,600	5.00% b
SD # 93 (CSF)	236,587	94,635	118,207	125%	(23,572)	-24.91% b
International Students	877,500	351,000	310,797	89%	40,203	11.45% b
Student Services Contracts	71,626	35,813	35,808	100%	5	0.01% b
Misc Revenue	6,500	3,250	70,254	2162%	(67,004)	-2061.65%
Rentals and Leases	134,000	67,000	75,809	113%	(8,809)	-13.15% b
Investment Income	95,000	47,500	193,711	408%	(146,211)	-307.81%
	<b>62,677,308</b>	<b>25,116,036</b>	<b>25,756,946</b>	<b>103%</b>	<b>(640,910)</b>	<b>-2.55%</b>
<b>Expenses</b>						
Salaries, Wages and Benefits	55,823,381	23,469,788	23,708,970	101%	(239,182)	-1.02%
Services, Contracts and Supplies	6,803,928	3,130,782	3,806,939	122%	(676,157)	-21.60% c
	<b>62,627,309</b>	<b>26,600,570</b>	<b>27,515,909</b>	<b>103%</b>	<b>(915,339)</b>	<b>-3.44%</b>

Excluded from this financial report is local capital expenditures for \$200,000 which will be included in future reporting.

- NOTES a. MOE issues grants to match expenses. Q2 receives 40% of annual budget.  
b. Grants and revenues are recorded when received, budget is averaged through the year.  
c. Contract and supply expenses not evenly spent through the year.

## SUMMARY BUDGET ANALYSIS

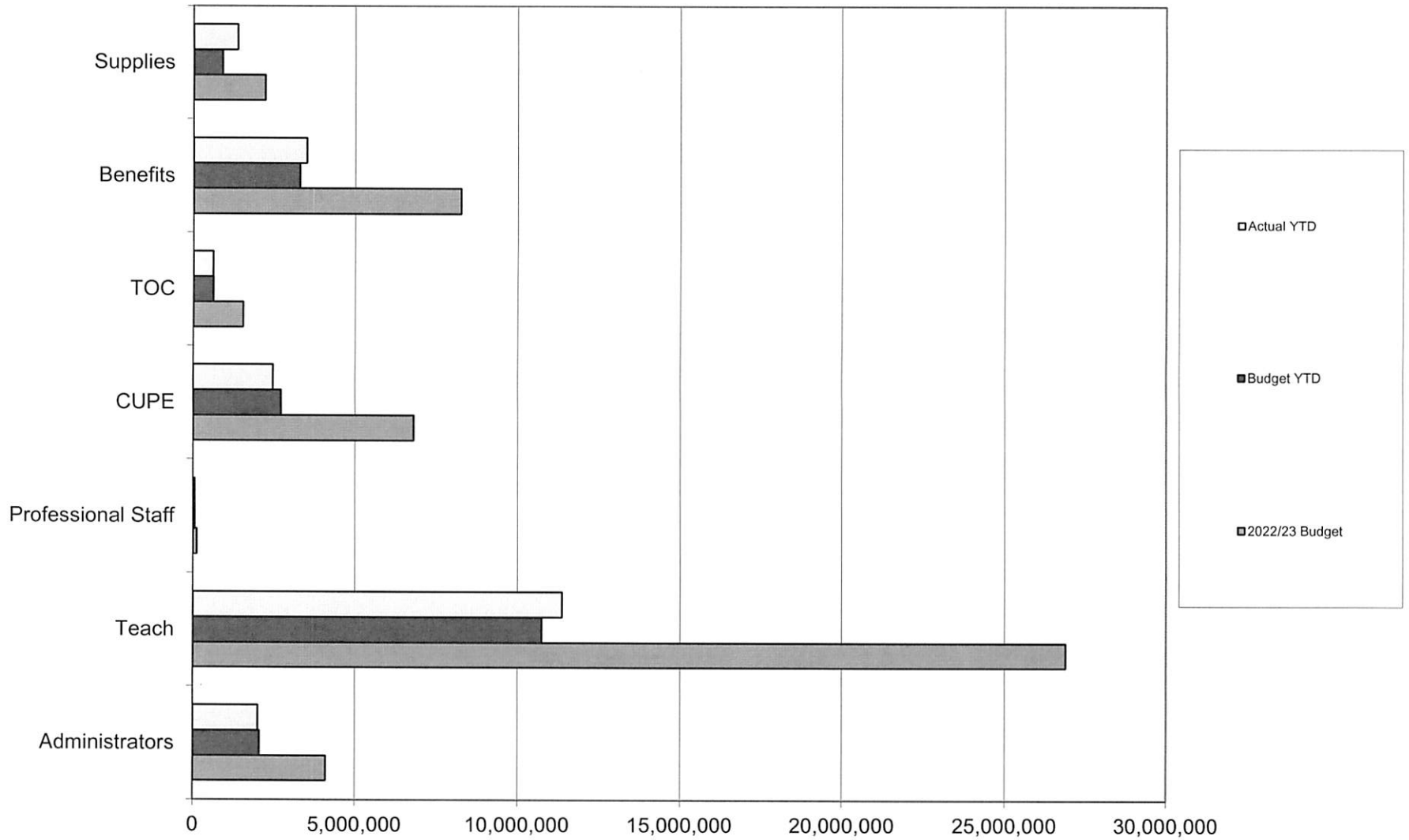
For the 6 Months Ended December 31, 2022

	2022/23 Budget Preliminary	Budget YTD	Actual YTD	YTD to Actual %	Under (Over) Budget \$\$	Budget %
<b><u>Instruction</u></b>						
Administrators	4,112,672	2,056,336	2,009,807	98%	46,529	2%
Teach	26,892,957	10,757,183	11,388,009	106%	(630,826)	-6%
Professional Staff	119,490	59,745	58,896	99%	849	1%
CUPE	6,794,848	2,717,939	2,469,830	91%	248,110	9%
TOC	1,543,744	617,498	608,364	99%	9,134	1%
Benefits	8,242,747	3,297,099	3,514,192	107%	(217,094)	-7%
Supplies	2,220,223	894,259	1,373,174	154%	(478,915)	-54%
	<u>49,926,681</u>	<u>20,400,059</u>	<u>21,422,273</u>	<u>105%</u>	<u>(1,022,214)</u>	<u>-5%</u>
<b><u>District Administration</u></b>						
Administrators	0	0	0	-	0	-
Professional Staff	1,159,889	579,945	631,205	109%	(51,261)	-9%
CUPE	374,114	187,057	187,007	100%	50	0%
TOC	0	0	9,846	-	(9,846)	-
Trustee	99,140	49,570	51,106	103%	(1,536)	-3%
Benefits	406,574	203,287	195,209	96%	8,078	4%
Supplies	734,395	367,198	396,616	108%	(29,418)	-8%
	<u>2,774,112</u>	<u>1,387,056</u>	<u>1,470,990</u>	<u>106%</u>	<u>(83,934)</u>	<u>-6%</u>
<b><u>Operations and Maintenance</u></b>						
Professional Staff	147,596	73,798	98,798	134%	(25,000)	-34%
CUPE	3,979,351	1,989,676	1,686,097	85%	303,578	15%
Benefits	1,005,530	502,765	428,762	85%	74,003	15%
Supplies	3,296,009	1,648,005	1,756,399	107%	(108,395)	-7%
	<u>8,428,486</u>	<u>4,214,243</u>	<u>3,970,057</u>	<u>94%</u>	<u>244,186</u>	<u>6%</u>
<b><u>Transportation and Housing</u></b>						
Professional Staff	0	0	4,946	-	(4,946)	-
CUPE	755,770	302,308	292,430	97%	9,878	3%
Benefits	188,959	75,584	74,465	99%	1,119	1%
Supplies	553,301	221,320	280,749	127%	(59,429)	-27%
	<u>1,498,030</u>	<u>599,212</u>	<u>652,590</u>	<u>109%</u>	<u>(53,378)</u>	<u>-9%</u>
<b>TOTAL</b>	<u><u>62,627,309</u></u>	<u><u>26,600,570</u></u>	<u><u>27,515,909</u></u>	<u><u>103%</u></u>	<u><u>(915,339)</u></u>	<u><u>-3%</u></u>

Variance of actual costs to budget YTD are highlighted as follows:

- 1) See detailed tabs for supplies variances
- 2) Residual variances not significant and are considered in the detailed reports.

# Instruction



## Instruction Budget Analysis

For the 6 Months Ended December 31, 2022

	Expense	2022/23 Budget	Budget YTD	Actual YTD	YTD to	Under (Over) Budget	
		Preliminary			Actual %	\$\$	%
10	Administrators	4,112,672	2,056,336	2,009,807	98%	46,529	2%
11	Teachers	26,892,957	10,757,183	11,388,009	106%	(630,826)	-6%
12	Professional Staff	119,490	59,745	58,896	99%	849	1%
13	Support Staff	6,794,848	2,717,939	2,469,830	91%	248,110	9%
14	TTOC	1,543,744	617,498	608,364	99%	9,134	1%
21	Benefits	8,242,747	3,297,099	3,514,192	107%	(217,094)	-7%
31	Prof & Technical Services	27,500	11,000	11,100	101%	(100)	-1%
32	Data Processing	255,412	102,165	221,841	217%	(119,677)	-117%
34	Pro-D and Travel	461,559	184,624	254,396	138%	(69,773)	-38%
36	Equipment Lease	61,700	30,850	39,343	128%	(8,493)	-28%
37	Membership Fees	6,000	2,400	4,638	193%	(2,238)	-93%
41	Bad Debt Recovery	0	0	0	-	0	-
42	Contracts	320,711	128,284	261,645	204%	(133,361)	-104%
43	Office Supplies	280,165	112,066	66,033	59%	46,033	41%
51	Instructional Supplies	482,167	192,867	398,424	207%	(205,557)	-107%
52	Books & Guides	225,000	90,000	50,354	56%	39,646	44%
53	Audio Visual Materials	0	0	0	-	0	-
58	Equipment	80,009	32,004	5,551	17%	26,453	83%
59	Computer Equipment Replacement	20,000	8,000	59,849	748%	(51,849)	-648%
		49,926,681	20,400,059	21,422,273	105%	(1,022,214)	-5%

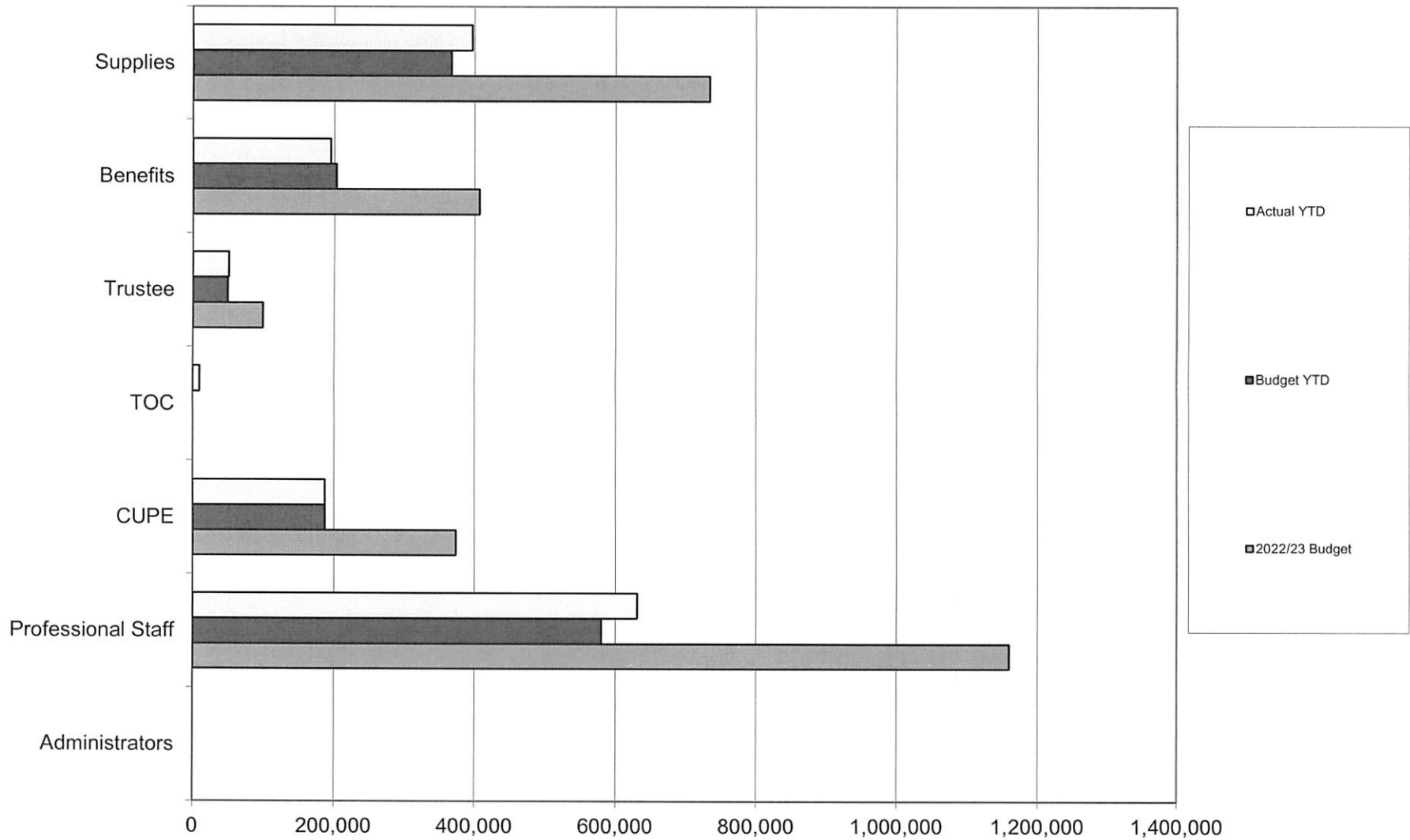
Budget centres includes schools and instructional support services.

Budget YTD is assumed to be incurred mostly from September to June. For the quarter ending, this would be 40% of the annual budget except Administrators, professional staff, and equipment lease (50%)

### NOTES

- a. Three professional development days were held in the first 6 months of the fiscal year
- b. Expenses were prepaid for 2022/2023
- c. Contract and supply expenses not evenly spent through the year

# Administration





## Administration Budget Analysis

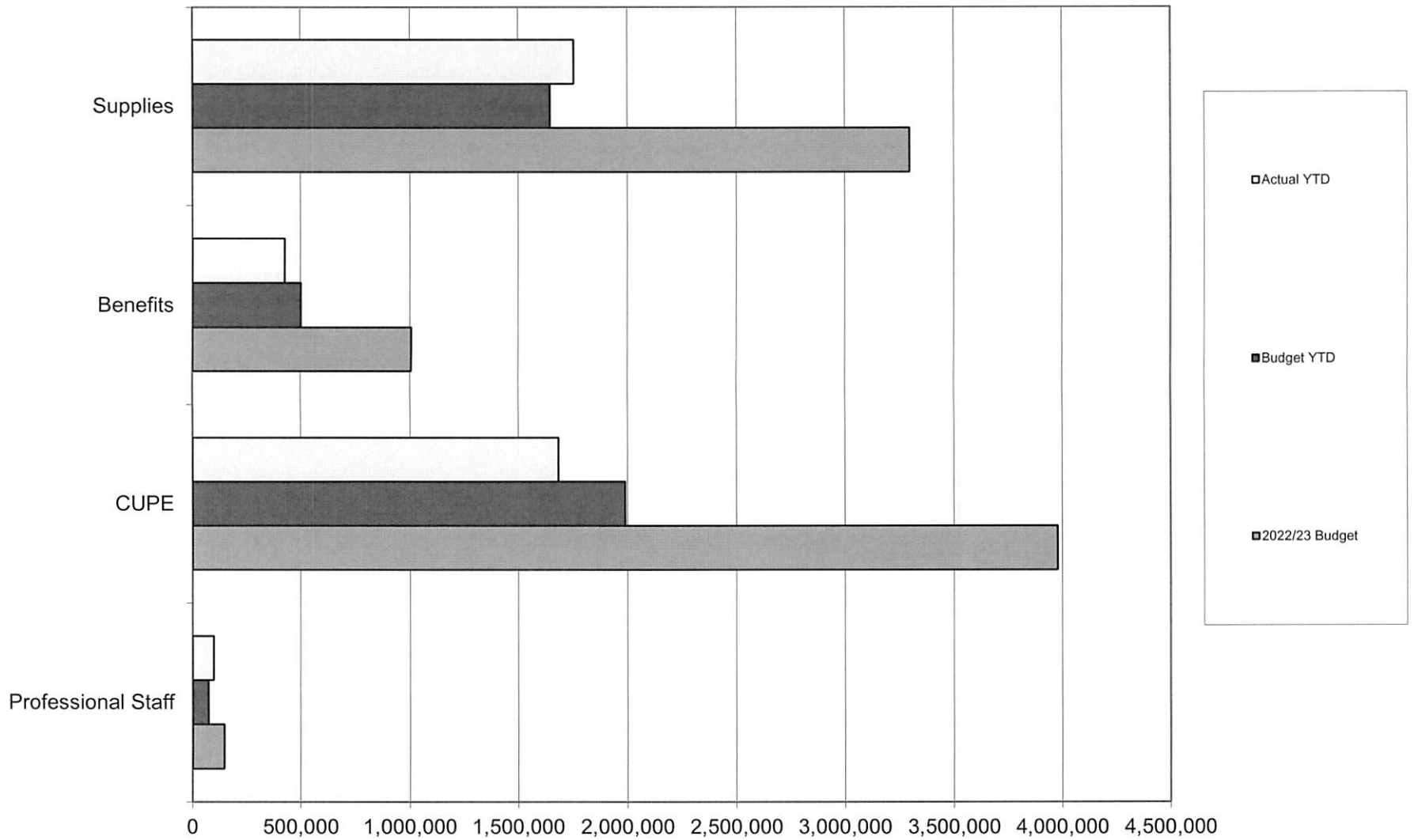
For the 6 Months Ended December 31, 2022

		2022/23 Budget	Budget YTD	Actual YTD	YTD to	Under (Over) Budget	
	Expense	Preliminary			Actual %	\$\$	%
10	Administrators	0	0	0	-	0	-
12	Professional Staff	1,159,889	579,945	631,205	109%	(51,261)	-9%
13	Support Staff	374,114	187,057	187,007	100%	50	0%
14	TOC	0	0	9,846	-	(9,846)	-
19	Trustees	99,140	49,570	51,106	103%	(1,536)	-3%
21	Benefits	406,574	203,287	195,209	96%	8,078	4%
31	Professional Services	97,000	48,500	35,989	74%	12,511	26%
32	Data Processing	5,000	2,500	2,399	96%	101	4%
34	Pro-D and Travel	203,630	101,815	83,325	82%	18,490	18%
36	Equipment Lease	0	0	0	-	0	-
37	Membership Fees	51,000	25,500	45,551	179%	(20,051)	-79%
39	Insurance	0	0	0	-	0	-
41	Service Charges	0	0	5,705	-	(5,705)	-
42	Services	110,000	55,000	36,999	67%	18,001	33%
43	Office Supplies	145,765	72,883	31,969	44%	40,914	56%
51	Supplies	122,000	61,000	154,678	254%	(93,678)	-154%
59	Software	0	0	0	-	0	-
		2,774,112	1,387,056	1,470,990	106%	(83,934)	-6%

Budget centres includes human resources, payroll, business services, board officers/executive, and trustee costs. Budget YTD is assumed to be incurred evenly throughout the year. For the quarter ending, this would be 50% of the annual budget.

NOTES a. Contract and supply expenses not evenly spent through the year.

# Maintenance



## Maintenance Budget Analysis

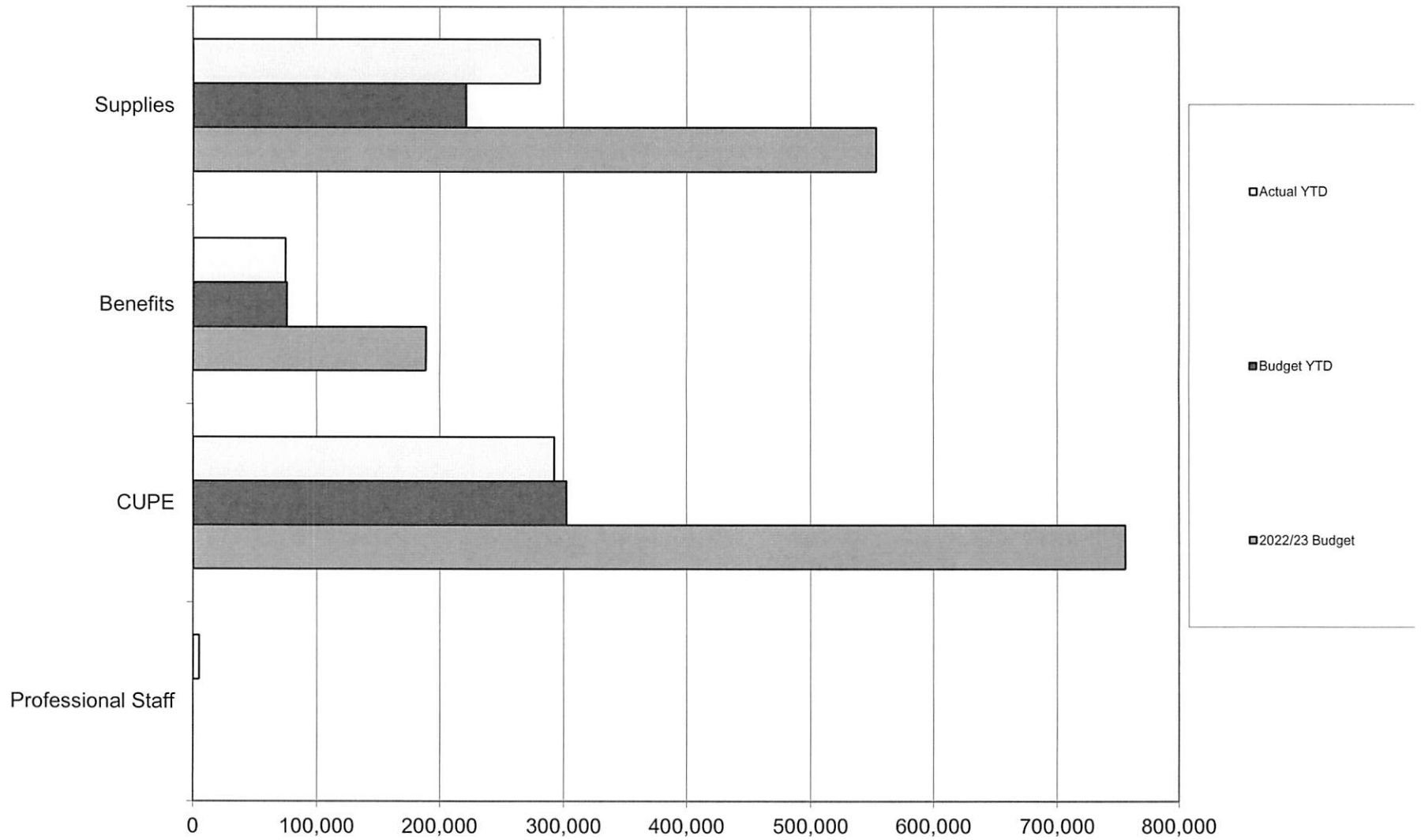
For the 6 Months Ended December 31, 2022

		2022/23 Budget	Budget YTD	Actual YTD	YTD to	Under (Over) Budget	
	Expense	Preliminary			Actual %	\$\$	%
12	Professional Staff	147,596	73,798	98,798	134%	(25,000)	-34%
13	Support Staff	3,979,351	1,989,676	1,686,097	85%	303,578	15% a
21	Benefits	1,005,530	502,765	428,762	85%	74,003	15%
32	Data Processing	22,000	11,000	23,291	212%	(12,291)	-112% b
34	Pro-D and Travel	71,324	35,662	35,471	99%	191	1% b
36	Equipment Lease	8,000	4,000	2,608	65%	1,392	35% b
37	Dues and Fees	1,900	950	442	47%	508	53% b
39	Insurance	92,000	46,000	110,675	241%	(64,675)	-141% b
42	Contracts	585,000	292,500	151,333	52%	141,167	48% b
43	Office Supplies	17,650	8,825	8,310	94%	515	6% b
51	Supplies	789,730	394,865	452,519	115%	(57,654)	-15% b
53	Cable	6,500	3,250	3,864	119%	(614)	-19%
54	Electricity	668,040	334,020	350,771	105%	(16,751)	-5% b
55	Fuel	549,730	274,865	251,980	92%	22,885	8% b
56	Municipal Utilities	114,195	57,098	59,043	103%	(1,946)	-3% b
57	Waste Disposal	70,940	35,470	37,086	105%	(1,616)	-5% b
58	Equipment	29,000	14,500	19,767	136%	(5,267)	-36%
59	Computer Replacement	270,000	135,000	249,238	185%	(114,238)	-85% b
		8,428,486	4,214,243	3,970,057	94%	244,186	6%

Budget centres includes facilities and technology costs. Budget YTD is assumed to be incurred evenly throughout the year. For the quarter ending, this would be 50% of the annual budget.

NOTES a. Maintenance chargebacks have been applied. Other programs paying for maintenance services.  
b. Contract and supply expenses not evenly spent through the year.

# Transportation



**Transportation Budget Analysis**

For the 6 Months Ended December 31, 2022

		2022/23 Budget	Budget YTD	Actual YTD	YTD to	Under (Over) Budget	
	Expense	Preliminary			Actual %	\$\$	%
12	Professional Staff	0	0	4,946	-	(4,946)	-
13	Support Staff	755,770	302,308	292,430	97%	9,878	3% a
21	Benefits	188,959	75,584	74,465	99%	1,119	1%
33	Student Travel	47,451	18,980	18,593	98%	388	2% a
34	Pro-D and Travel	10,200	4,080	8,342	204%	(4,262)	-104%
37	Dues and Fees	2,000	800	0	0%	800	100%
39	Insurance	46,000	18,400	32,777	178%	(14,377)	-78% b
42	Contracts	70,000	28,000	55,917	200%	(27,917)	-100% a
43	Office Supplies	1,250	500	1,156	231%	(656)	-131%
51	Supplies	375,400	150,160	163,965	109%	(13,805)	-9% a
58	Equipment	1,000	400	0	0%	400	100%
		1,498,030	599,212	652,590	109%	(53,378)	-9%

Budget centres includes transportation and housing costs. Budget YTD is assumed to be incurred evenly throughout the year. For the quarter ending, this would be 40-50% of the annual budget.

- NOTES a. Contract and supply expenses not evenly spent through the year.  
 b. Fleet insurance prepaid in Q1 for the year

**School District No. 72 (Campbell River)**  
**Trustee and Executive Expenses**  
**For the 6 Months Ended December 31, 2022**

	<u>Salary/Remuneration</u>	<u>Pro-D</u>	<u>Expense Reimbursement</u>	<u>Total</u>
<b><u>Trustees</u></b>				
Briggs	\$ 7,049		\$ 547	\$ 7,596
Eddy	7,810		2,761	10,570
Franklin	4,699		392	5,091
Gillis	2,522		1,234	3,756
Gladish	2,350		1,229	3,579
Hagen	7,049		719	7,768
Harper	2,350		1,345	3,694
Kerr	5,532		358	5,891
McMann	7,049		1,411	8,460
Wilson	4,699		182	4,881
	<u>51,106</u>	<u>-</u>	<u>10,178</u>	<u>61,285</u>
<b><u>Executives</u></b>				
Superintendent	95,464	1,698	2,574	99,735
Associate Superintendent	75,693	4,124	5,469	85,286
Associate Superintendent	75,693	-	3,835	79,528
Secretary Treasurer	79,244	1,775	2,919	83,937
	<u>326,093</u>	<u>7,596</u>	<u>14,798</u>	<u>348,487</u>
<b>Total</b>	<b>\$ 377,200</b>	<b>\$ 7,596</b>	<b>\$ 24,976</b>	<b>\$ 409,772</b>

**School District No. 72 (Campbell River)**  
**Trustee and Executive Expenses**  
**For the Year Ended June 30, 2022**

	<u>Salary/Remuneration</u>	<u>Pro-D</u>	<u>Expense Reimbursement</u>	<u>Total</u>
<b><u>Trustees</u></b>				
Briggs	\$ 13,665		\$ 2,159	\$ 15,824
Eddy	14,753		2,963	17,716
Franklin	13,665		722	14,388
Hagen	13,665		-	13,665
Kerr	16,061		4,585	20,646
McMann	13,665		1,871	15,536
Wilson	13,665		119	13,785
	<u>99,140</u>	<u>-</u>	<u>12,420</u>	<u>111,559</u>
<b><u>Executives</u></b>				
Superintendent	192,775	3,223	5,100	201,098
Associate Superintendent	168,328	5,207	5,813	179,348
Associate Superintendent	160,177	773	3,000	163,949
Secretary Treasurer	164,030	3,540	7,254	174,824
	<u>685,310</u>	<u>12,742</u>	<u>21,167</u>	<u>719,219</u>
<b>Total</b>	<b>\$ 784,449</b>	<b>\$ 12,742</b>	<b>\$ 33,586</b>	<b>\$ 830,778</b>